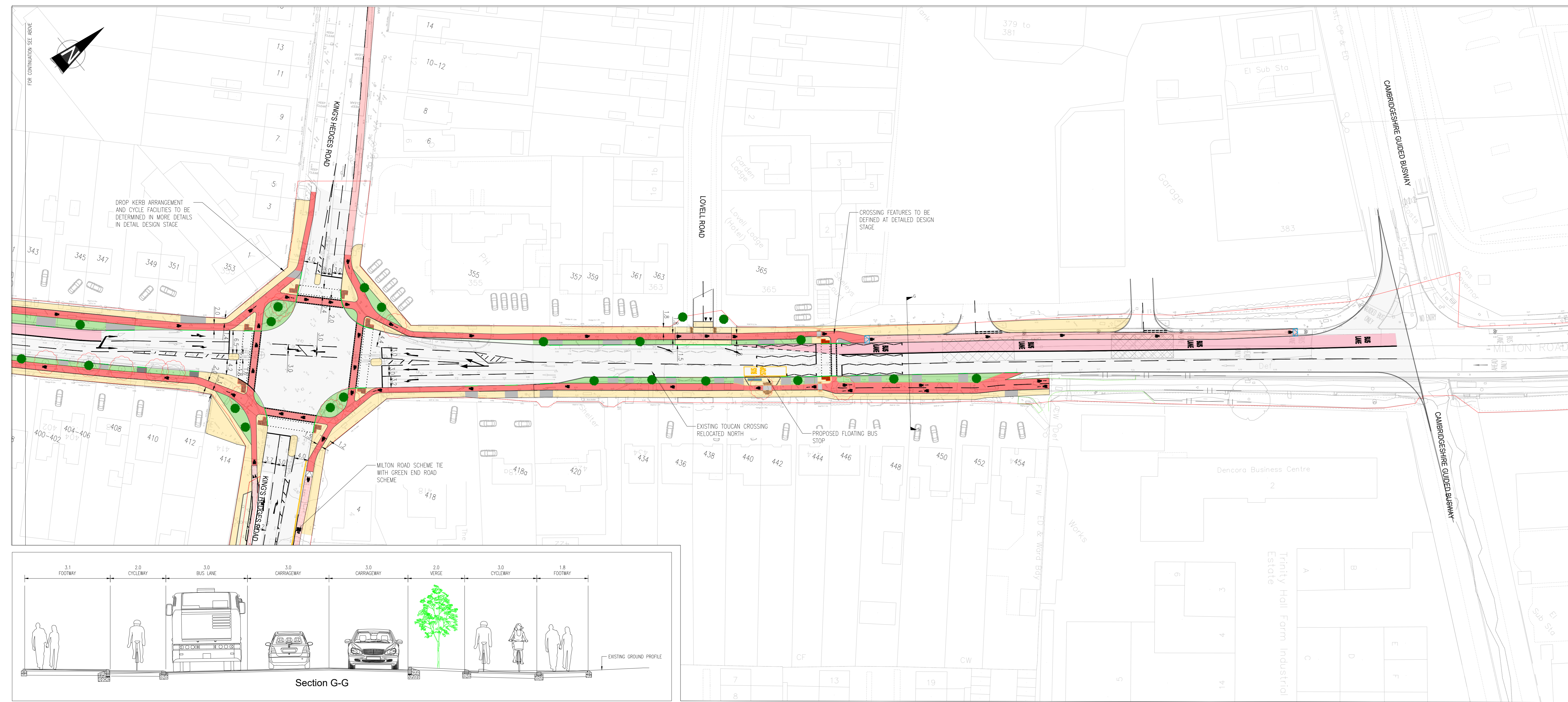
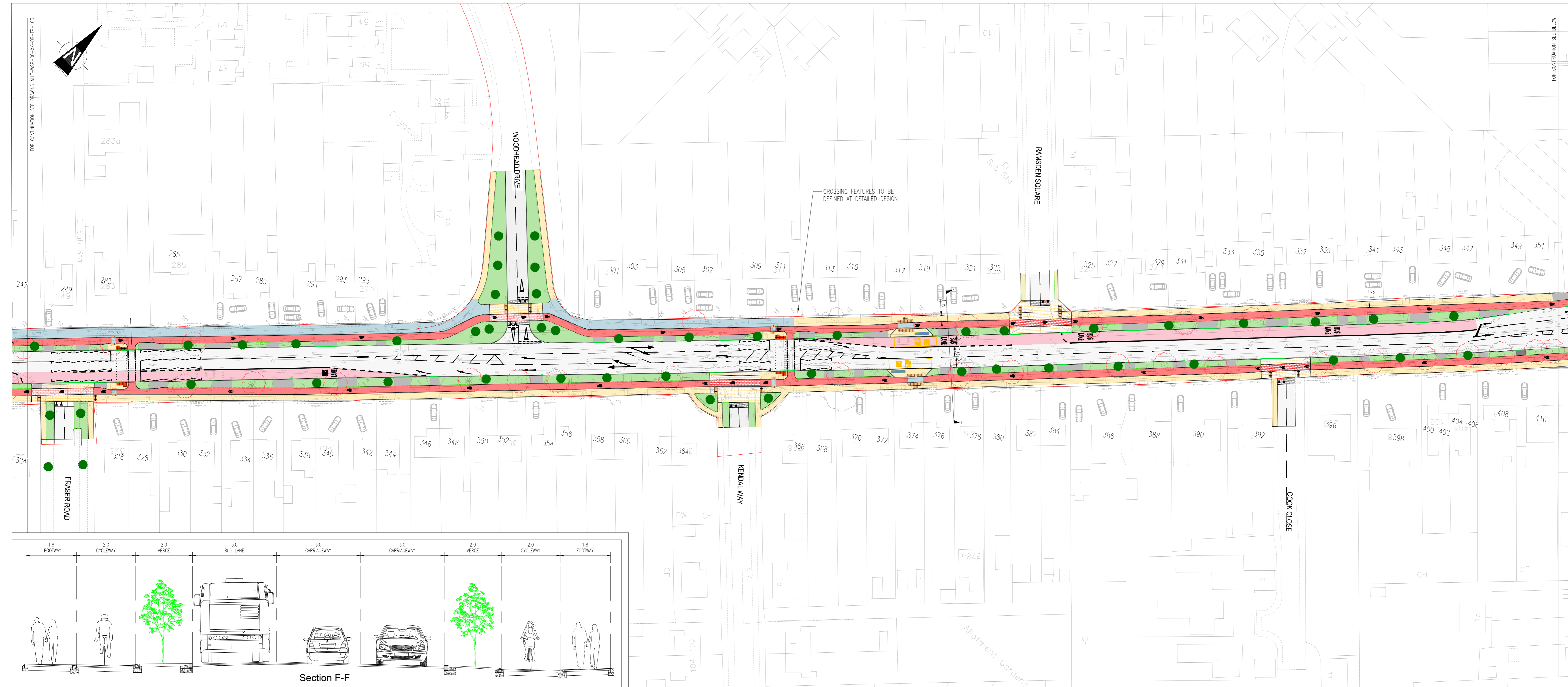


LEGEND:

CARRAGEWAY FINISH	TACTILE PAVING - RED
GRASS VERGE	TACTILE PAVING - BUFF
CYCLEPATH	BUS STOP CAGE
FOOTWAY	BUS SHELTER
BLOCK PAVING RED	TREE TO BE KEPT
PAVING SLABS	TREE TO BE REMOVED
HARD LANDSCAPING	PROPOSED TREE
SHARED SURFACE	PROPOSED RAMP
RAISED CYCLE LANE	DROPPED KERB
RAISED ACCESS JUNCTION	HIGHWAY BOUNDARY
PRIVATE VEHICULAR ACCESS	



PO3	23/02/2018	AWM	SUBMIT FOR CONSULTATION	AWM	NY
PO2	18/02/2018	WOTD	CAD AMENDMENTS	AWM	NY
PO1	08/02/2018	GRU	FIRST ISSUE	AWM	NY
REV	DATE	BY	DESCRIPTION	CHK	APP

DRAWING STATUS: S2 - FOR INFORMATION

**wsp**

62-64 Hills Road, Cambridge, CB2 1LA, UK  
 T +44 (0) 1223 558 050, F +44 (0) 1223 558 051  
 www.wsp.com

CLIENT: GREATER CAMBRIDGE PARTNERSHIP

PROJECT: MILTON ROAD IMPROVEMENT SCHEME

TITLE: GENERAL ARRANGEMENT SHEET 3

SCALE: 1:500	CHECKED: AWM	APPROVED: NP
PROJECT NO: 70012912	DESIGNED: GRU	DATE: May 18
DRAWING NO: MILT-WSP-00-XX-DR-TP-104		REV: P03